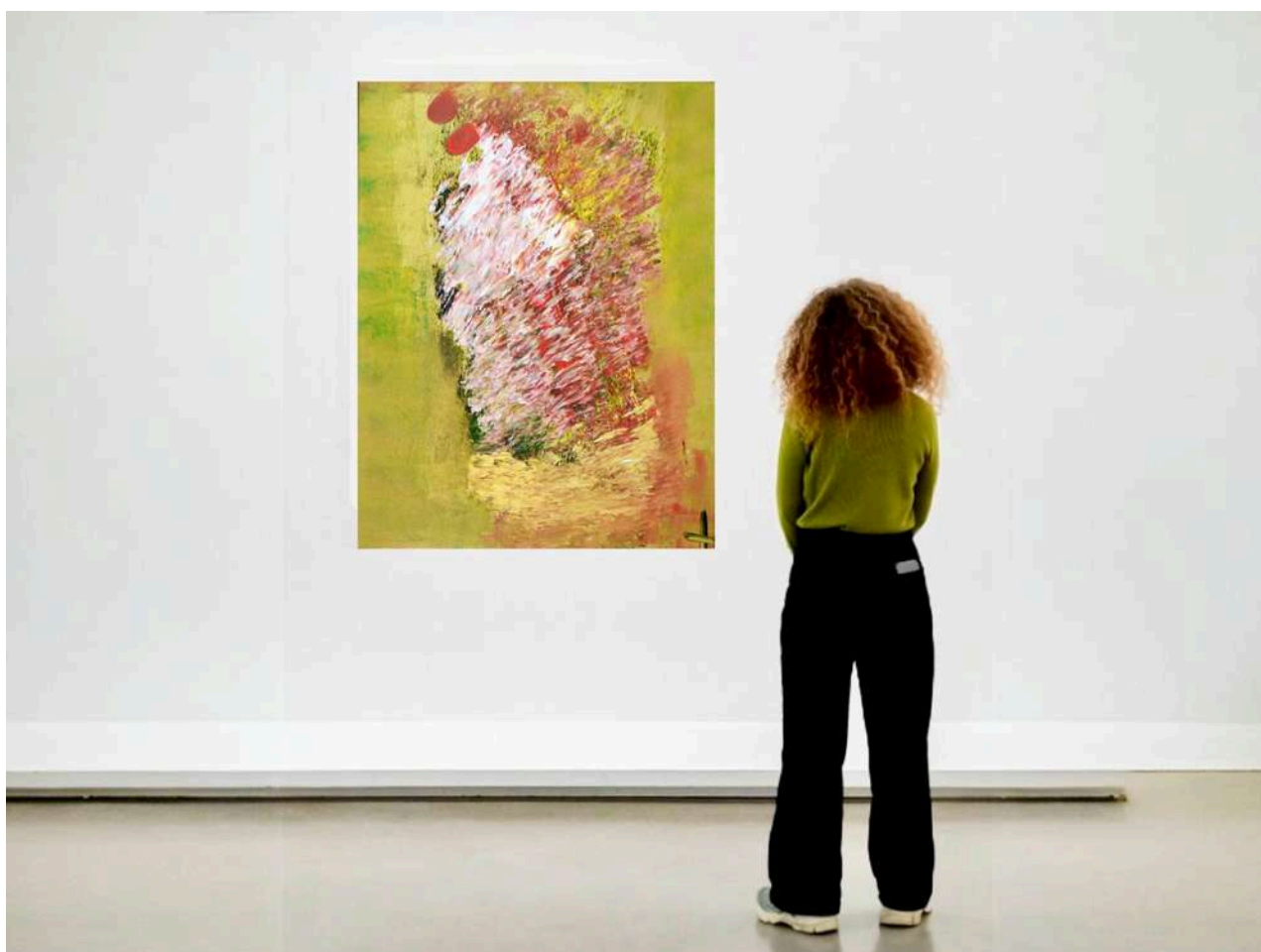

PRIMAVERA | APRIL 24 - MAY 31

Ritsch-Fisch

Galerie

A.C.M. • Étienne CHAMPION
Morgane SALMON • Flore SIGRIST



OPENING

April 24, 2025 - 6:30 PM to 9:00 PM

6 rue des Charpentiers, Strasbourg

EXHIBITION | 24 AVRIL-31 MAI

Ritsch-Fisch

Galerie

Ritsch-Fisch Gallery is pleased to present Primavera, a group exhibition bringing together the work of A.C.M., Morgane Salmon, Flore Sigrist, and Étienne Champion. This artistic encounter celebrates spring not merely as a season, but as a metaphor for renewal and vitality. It explores the connections between abstraction, figuration, and sculptural experimentation through four distinctive approaches.

A.C.M.

Flore
SIGRIST

Morgane
SALMON

Etienne
CHAMPION

Opening

April 24 6:30 pm

Exhibition

April 24
May 31, 2025

6 rue des Charpentiers
Strasbourg

A.C.M.'s constructed assemblages command attention through their density and raw materiality. The fragments, marked by the scars of time, oscillate between collapse and elevation. Straddling the line between architecture and sculpture, A.C.M. explores the memory embedded in matter—its ability to resist or to yield. From these forms emerges a precarious balance, animated by a vibrant, teeming life, like evolving remnants bearing witness to a world in perpetual transformation.

In **Flore Sigrist's** work, color becomes both structure and pulse. Chromatic contrasts clash and resonate, generating abstract landscapes infused with light and energy. Her gesture—both sweeping and controlled—conveys a universal vitality. Rather than depict reality, she captures its momentum, offering a vibrant pictorial space that is autonomous, almost organic.

Morgane Salmon creates sculptures balanced on the edge of fragility. Her forms carry a quiet tension between stability and motion, evoking organisms in transformation. Far from asserting monumentality, her work settles gently into its space, borne by an organic and generous presence that invites contemplation of the silent metamorphoses of the living.

Étienne Champion, meanwhile, sculpts both matter and light. His volumes engage with contrast, blending polished and rough surfaces, solid and hollow forms. As light passes through them, the works reveal unexpected facets, drawing the viewer into a perceptual exploration. With Étienne Champion, light becomes a revelatory force, constantly redrawing the contours of volume.





